

STATUS

## SECTION 96

Do not scale drawing. Verify all dimensions on site.  
Report any discrepancies in documentation to architect.  
This drawing is for the purpose of council approval  
and as such, is not suitable for construction.

### NOTES

A3: 1:400 @ A3  
A1: 0 1 5 1:200 @ A1 10

S1	06.03.15	S96 ISSUE
H	27.02.15	DA ISSUE
P5	26.02.15	DA ISSUE
P4	19.02.15	PRE DA ISSUE
P3	06.02.15	PRELIMINARY ISSUE
P2	30.01.15	PRELIMINARY ISSUE
G	22.10.14	REVISED FOR DA ISSUE
F	06.08.14	REVISED FOR DA
E	13.06.14	REVISED FOR DA ISSUE
D	06.06.14	ISSUE FOR INFORMATION
C	21.05.14	REVISED FOR DA ISSUE
B	27.02.14	ISSUE FOR DA
A	26.02.14	ISSUE FOR DA
I	06.03.15	DA ISSUE

ISS DATE PURPOSE OF ISSUE

### CLIENT

Al Maha Pty Ltd

# squillace

### ARCHITECTS INTERIOR DESIGNERS

#### SYDNEY

2 Liverpool Lane, East Sydney NSW 2010  
Ph: +61 2 8354 1300 | Fax: +61 2 8354 1311  
ABN: 24 132 554 753

#### MELBOURNE

Suite 6001, Level 6, Mid Town Plaza  
246 Bourke Street, Melbourne VIC 3000  
Ph: +61 3 9639 3777 | Fax: +61 3 9639 3666  
ABN: 34 137 620 538

**NOMINATED ARCHITECT**  
Vince Squillace Reg No. 6468 (NSW),  
17219 (VIC), 3677 (QLD)

[squillace.com.au](http://squillace.com.au)

### PROJECT

#### HOMEBUSH APARTMENTS

Cnr Powell St & Parramatta Rd  
Homebush, NSW 2140

### DRAWING NO.

**DA-160**

### ISSUE

**S1.**

### JOB NO.

**OMA1309**

### SCALE

**1:200 @ A1**

### DATE

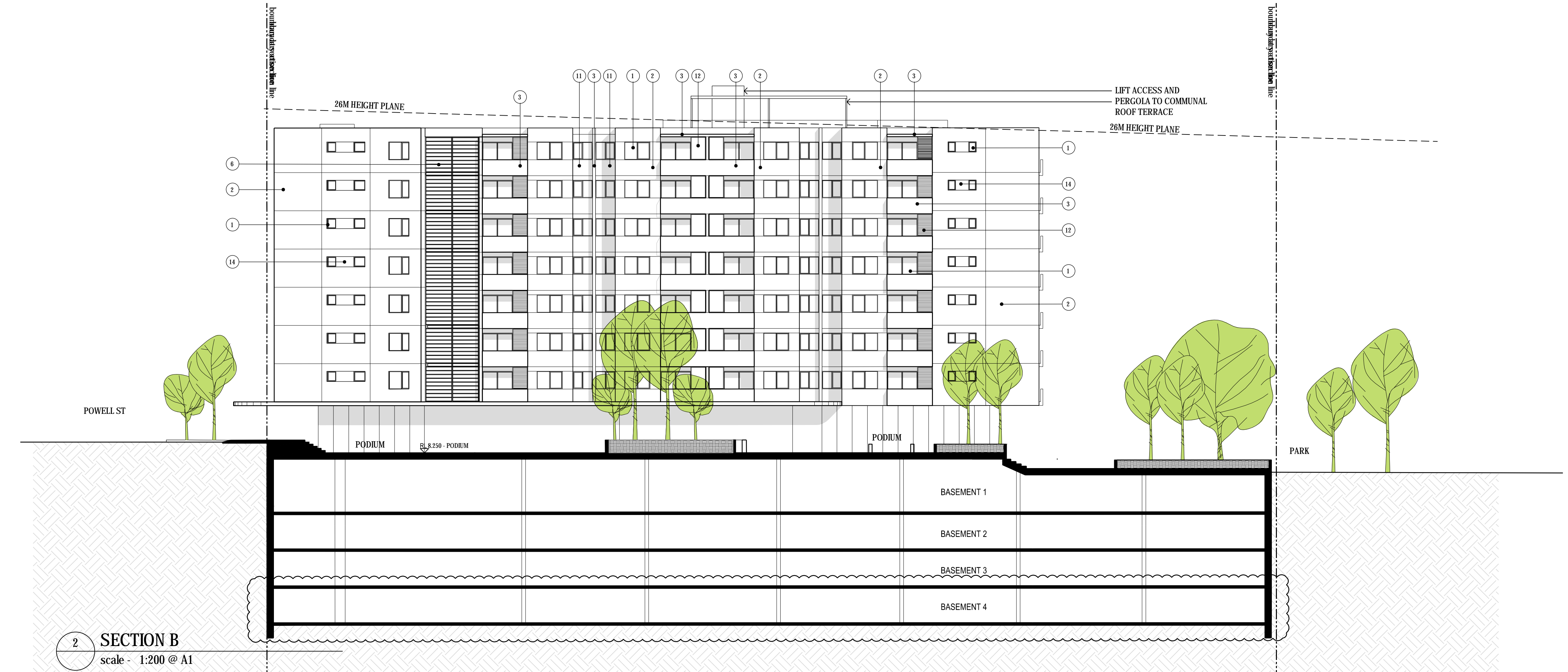
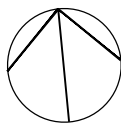
**MAR 2015**

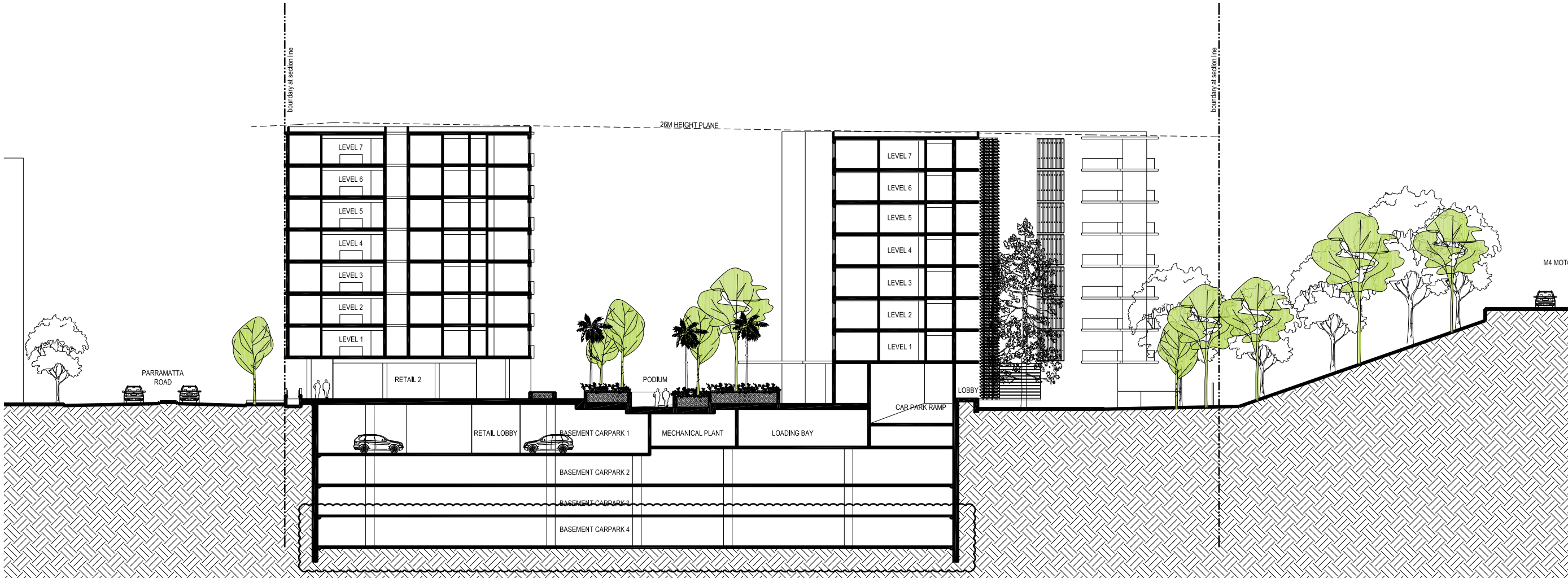
### DRAWING TITLE

**SECTIONS A-A and B-B**

DRAWN BY  
**CP**

CHECKED BY  
**VS**





1 SECTION C  
scale - 1:200 @ A1

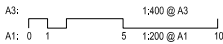
© This work is copyright. Apart from any use permitted under the copyright act 1968, no part may be reproduced by any process, nor may any other exclusive right be exercised, without the permission of Squillace Architects Pty Ltd, Australia.



STATUS  
SECTION 96

Do not scale drawing. Verify all dimensions on site. Report any discrepancies in documentation to architect. This drawing is for the purpose of council approval and as such, is not suitable for construction.

NOTES



S1	06.03.15	SECTION 96 - BASEMENT
F	27.02.15	DA ISSUE
P5	26.02.15	DA ISSUE
P4	19.02.15	PRE DA ISSUE
P3	06.02.15	PRELIMINARY ISSUE
P2	30.01.15	PRELIMINARY ISSUE
E	22.10.14	REVISED FOR DA ISSUE
D	13.06.14	REVISED FOR DA ISSUE
C	21.05.14	REVISED FOR DA ISSUE
B	27.02.14	ISSUE FOR DA
A	26.02.14	ISSUE FOR DA
G	06.03.15	DA ISSUE

ISS	DATE	PURPOSE OF ISSUE
-----	------	------------------

CLIENT  
Al Maha Pty Ltd

squillace

ARCHITECTS  
INTERIOR DESIGNERS

**SYDNEY**  
2 Liverpool Lane, East Sydney NSW 2010  
Ph: +61 2 8354 1300 | Fax: +61 2 8354 1311  
ABN: 24 132 554 753

**MELBOURNE**  
Suite 6001, Level 6, Mid Town Plaza  
246 Bourke Street, Melbourne VIC 3000  
Ph: +61 3 9639 3777 | Fax: +61 3 9639 3666  
ABN: 34 137 620 538

**NOMINATED ARCHITECT**  
Vince Squillace Reg No: 6468 (NSW),  
17219 (VIC), 3677 (QLD)

squillace.com.au

PROJECT  
HOMEBUSH APARTMENTS

Cnr Powell St & Parramatta Rd  
Homebush, NSW 2140

DRAWING NO. ISSUE  
**DA161 S1.**  
JOB NO. SCALE DATE  
**OMA1309 1:200 @ A1 JAN 2015**

DRAWING TITLE  
SECTION C-C

DRAWN BY CHECKED BY  
**CP/FG VS**